

**Hatchery  
excellence.  
Made easy.**

# Mission and Vision

## Now.

Providing the poultry industry with worry-free hatcheries, now and in the future.

## The future.

Aspiring to make poultry protein accessible & affordable globally.



# Introducing the **Jamesway Pillars of Operations:**

At Jamesway, our commitment to excellence is built on three core pillars that guide everything we do:



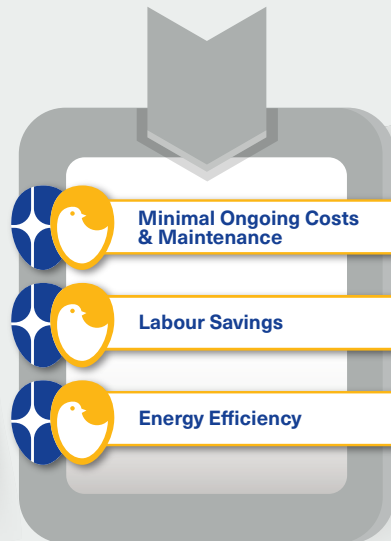
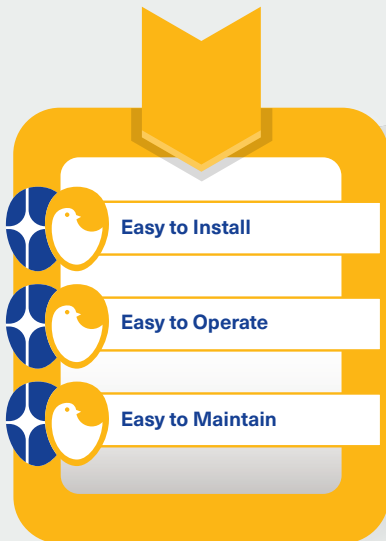
**Robust, reliable and easy-to-use** machines that are easy to learn and operate.



**User-friendly, consistent, and effective** products, positioned at a **competitive mainstream price point**.



Continued focus on energy-efficiency and ease of operation and maintenance that **reduce ongoing costs**.



These pillars define our approach to helping you achieve hatchery success, every step of the way!

**Hatchery excellence. Made easy.**

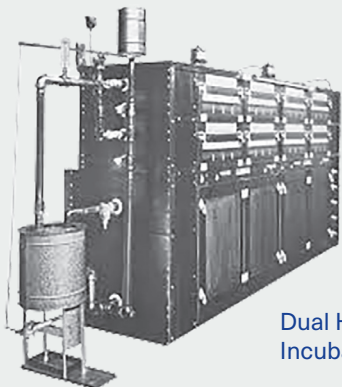
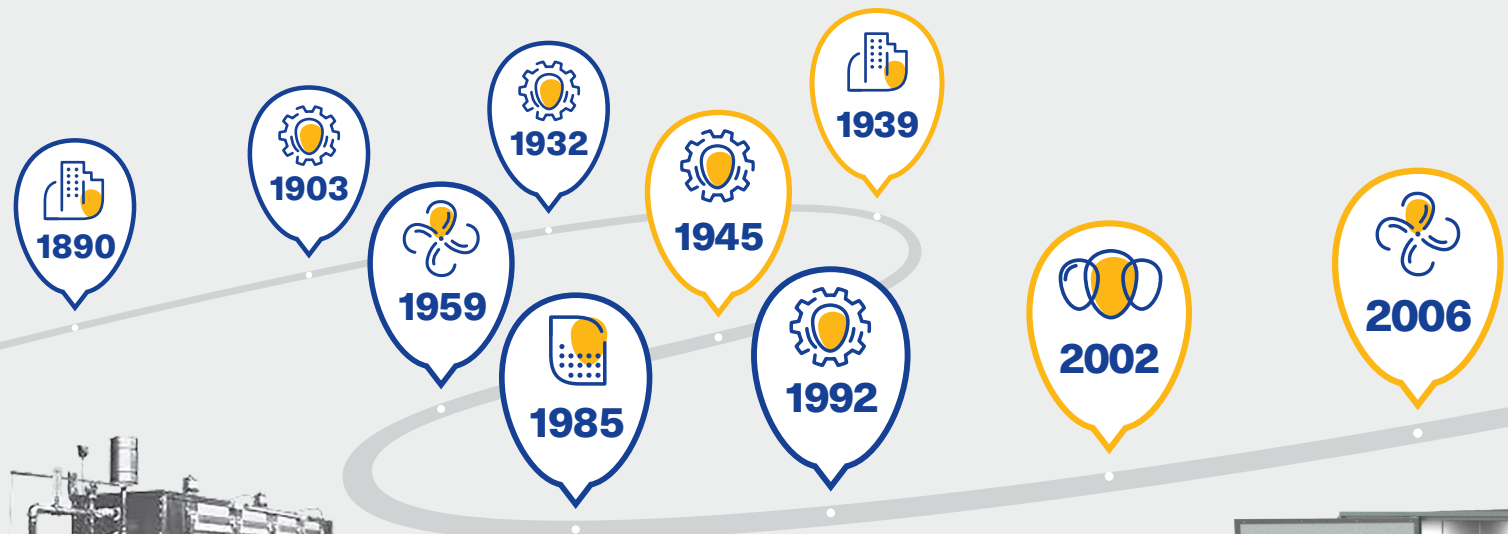


## Milestones

# The foundation.

**Jamesway and Chick Master:** A Global Leader in Hatchery Solutions

Together, Jamesway and Chick Master have become one of the world's largest manufacturers of hatchery incubators. Our commitment to service, reliability, and dependability has never been stronger.




Dual Heating System  
Incubator




Platinum 3  
Machine

**1890**  **Jamesway Founded**

**1903**  Jamesway Farm Machinery Develops First Incubator

**1932**  2 in 1 Incubator Standard for Industry

**1939**  **Chick Master Founded**

**1945**  Automatic Turning System Implemented

**1959**  World's First MS Machine with Laminar Airflow

**1985**  Hatchcom Controller


**1992**  ACI Single-Stage Launched

**2002**  Avida Incubation System with Zone Control

**2002**  Platinum 1 Launched

**2006**  Heat Recovery & Energy Management Technology

**2008**  1st Variable Frequency Drive

**2010**  CC3 Climate Control System

**2013**  Platinum 2.0 Launched

**2015**  Modular Ventilation

**2016**  ROCK Controls

**2019**  XCM 24V DC (JW)

**2020**  **Jamesway & Chick Master Integration**

**2023**  Platinum 3 Launched

**2008**

**2010**

**2013**

**2015**

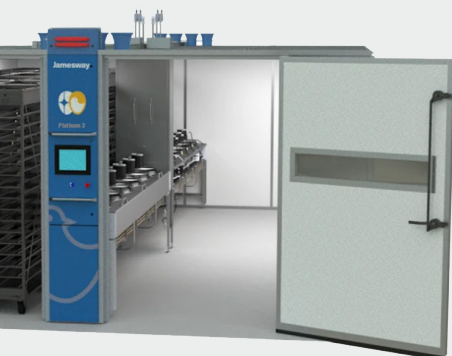
**2016**

**2019**

**2020**

**2023**

 Jamesway  
 Chick Master



**Hatchery excellence. Made easy.**



# Trust the numbers.

For more than 230 combined years, designing and installing incubation systems and hatchery equipment has been at the heart of our business. We have continuously built on this extensive experience to expand our expertise, develop modern products and practices, and enhance our services.

Jamesway incubators are installed in over 3,000 hatcheries worldwide, serving a diverse customer base including chicken broilers, breeders, and layers. We also offer a broad range of solutions for turkeys, ducks, and vaccines.

Our consultants and agents, with an average of 18 years of hands-on hatchery experience, provide unparalleled support from design and installation to after-market education.

We proudly maintain the largest professional staff among hatchery machine manufacturers, ensuring comprehensive assistance throughout your hatchery's lifecycle.

Our team of hatchery consultants, many holding doctorates, guide our machine development, educational programs, and field services. Their expertise forms the foundation of our extensive knowledge base. Jamesway-approved

consultants are available to offer educational training and industry-relevant seminars and workshops. We also continuously expand our library of webinars and videos at no additional cost.

Investing in Jamesway means securing robust, long-lasting machines with an average lifespan of over 30 years, providing a solid foundation for your growing hatchery.



**230**

combined years proudly  
serving the poultry  
industry



**3000+**

hatcheries with  
Jamesway Chick Master  
incubator systems



Over

**112**

webinars and  
training videos



**115**

global sales and  
service team supporting  
our customers



**150**

countries with  
Jamesway Chick Master  
incubator solutions



**278**

ventilation  
systems installed  
worldwide



**18+**

years' experience of our  
hatchery consultants  
(average)



**62**

service and  
installation managers  
worldwide



**30+**

years life of  
our incubators  
(average)

Hatchery excellence. Made easy.





# Products: Single-Stage Solutions

## P Series:

Enhanced Features for Improved Performance

### Fully Sealed Cabinet

Fully sealed cabinets without external belts or pulleys ensure precise CO<sub>2</sub>

### On Trolley Turning

Signature pneumatic turning - active on each trolley, ensures consistent turning angle for each tray.

### Higher Heat Loads

Increased cooling coil surface area for a more responsive temperature control.

### Environmental Control

The removable small fan unit ensures uniform airflow, easy sanitation, and improved energy efficiency for optimal environmental control.

### Easy Programming

Large 12" colour HMI screen and intuitive interface.

### Large Capacity Incubation

The P Series offers one of the largest capacities available, designed to support high-efficiency operations in large-scale hatcheries. Built for demanding workloads, the P Series ensures reliable performance with ease.

### 360: Easy Hatchery Management

360 is a cloud-based, all-in-one platform that connects people, processes, and performance data in one place. With powerful analytics, real-time monitoring, and preventative maintenance tools, 360 helps hatcheries operate smarter and deliver better outcomes.



# Platinum 3



Hatchery excellence. Made easy.



# Products: Multi-Stage Solutions

## The Classic

The trusted Classic series offer a proven, durable solution for hatcheries seeking simplicity and consistency. These systems are designed for operational ease and long-term reliability, making them ideal for facilities looking for a dependable and efficient approach to incubation.

### The Ideal Environment

- **Unique Setting Pattern:** Unique setting pattern allows eggs of varying ages to share heat generated during the incubation cycle, creating more energy efficient environment.
- **Efficient Airflow:** High-efficiency blade fans ensure even air distribution and lower energy consumption.
- **Effective Heat Management:** Multiple exhaust ports control embryonic heat buildup for balanced internal conditions.
- **Low Maintenance:** Straightforward design and durable components make upkeep simple and cost-effective.





# Encore

## Maximize Hatchability with Effortless Heat Treatment

The Platinum 3 Encore by Jamesway is a user-friendly, energy-efficient solution designed specifically for Heat Treatment. This innovative system helps hatcheries recover hatch-ability losses due to extended egg storage by delivering uniform, rapid heat and cooling treatment—all within a robust, easy-to-use design.

**Heat treat your eggs in an environment specifically designed to maximize hatch-ability**

### Why Heat Treatment?

- Increased Heating Performance: Rapid, uniform heat delivery throughout the egg pack ensures even and effective treatment.
- Enhanced Cool Capability: Quickly and uniformly cools eggs post-treatment, preserving embryo integrity.
- Power Exhaust Fan: Boosts airflow and ensures stable internal conditions during and after heat treatment.
- Unique Profile Design for Heat Treatment: The Encore's exclusive Heat Treatment profile optimizes temperature curves and airflow tailored for heat treatment protocols.



#### Features:

Increased heating – quickly, uniformly heat egg pack
Increased cooling – quickly, uniformly cool egg pack
Power exhaust fan
Unique profile design specifically for Heat Treatment
Specially Designed SPIDES Profile

# Products: Airway

## Modular: Flexibility

### Create the Perfect Environment for your Hatchery while Saving Energy

The Modular Ventilation System offers cost-effective, adaptable solutions for hatcheries of any size. Easy-to-install ground-level modules provide efficient room ventilation with built-in redundancy, 100% fresh air intake, and a Heat Recovery System for optimal chick quality and lower energy costs.



## Airway ART

### Achieve superior biosecurity and energy efficiency with the Jamesway ART.

This refrigerant-free system provides heat recovery with 100% fresh air and minimal maintenance.

Boost hatchery performance and cut energy costs by recycling heat from growing eggs with the Jamesway ART. Experience the difference today!



## CC3: The Ultimate Hatchery Ventilation Solution

### A robust and reliable system that pays for itself.

The CC3 is a fully-packaged ventilation system designed to ensure optimal incubation conditions, superior chick quality, and maximum hatchability.



# Products: 360: Easy Hatchery Management



**360 is a cloud-based, all-in-one platform that connects people, processes, and performance data in one place.**

With powerful analytics, real-time monitoring, and preventative maintenance tools, 360 helps hatcheries operate smarter and deliver better outcomes.

- **Connect:** Automated data backups with secure cloud storage
- **Remote:** Real-time monitoring access from anywhere
- **\*\* Maintain:** Preventative maintenance and inventory management
- **\*\* Guided Diagnostics:** Machine troubleshooting with step-by-step solutions
- **\*\* Track:** Comprehensive egg tracking and reporting



\*\* 360 Lite is available as an alternative for customers with Maestro. \*\*

**Hatchery excellence. Made easy.**





# Products: Accessories

## Egg Flats

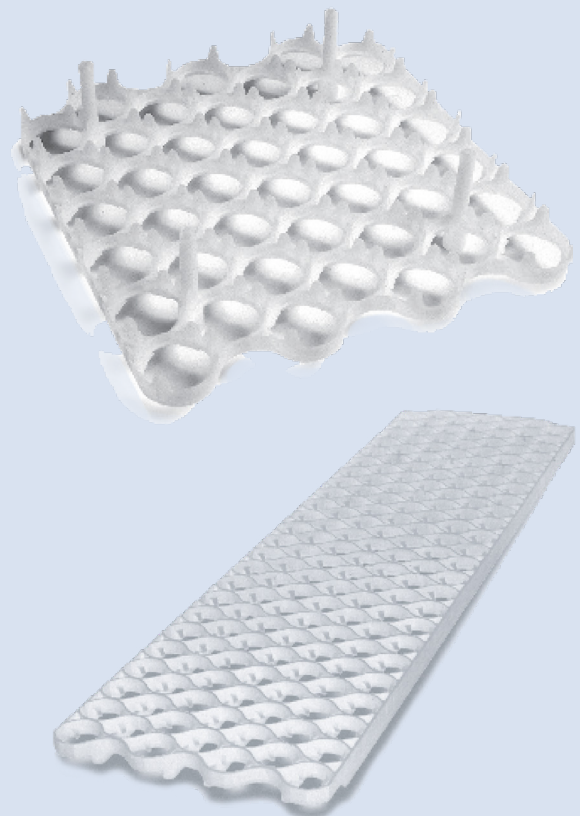
**Egg Flats: Engineered for unbeatable egg protection.**

### Versatile Design for All Egg Types

Jamesway egg flats feature a durable plastic build, uniform pocket sizes, and cushioning material for safe transport and storage. Available in various shapes and sizes to fit chicken, duck, and turkey eggs.

**Egg flats are available in nine capacities to suit your specific hatchery requirements:**

- Jamesway 42, 84 and 168 for chicken
- Chick Master 54, 84 and 165
- Also available in 30 and 60 for turkey and duck.



## SST – Self Stacking Transportation System

Streamline egg transportation with the Jamesway SST system: increase egg capacity, reduce breakage, and ensure secure stacking from farm to hatchery with reusable, self-stacking trays and pallets.

### Advantages:

- **Increase Profit:** Double egg capacity per trip to cut transport costs and boost earnings.
- **Reduce Breakages:** Durable polypropylene cushions eggs, keeping breakage rates below 0.5%.
- **Ensure Hygiene:** Easy-to-clean, microbe-resistant materials minimize disease risk.

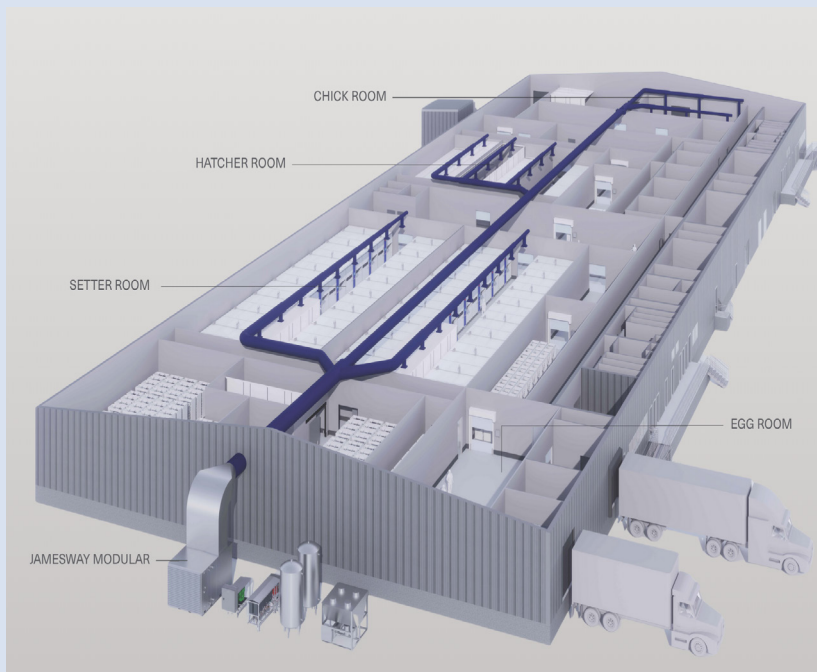


# Hatchery Services and Support

## Understanding Your Jamesway Support Network

It's important to recognize that your Jamesway Support Network consists of a multifaceted team, including:

### Tailored to your needs



### Hatchery Services



Hatchery excellence. Made easy.



# Global Parts Fulfillment Footprint

-  Jamesway Fulfillment
-  Local Agent Spare Part Inventory
-  Cambridge, Canada- Global Manufacturing & Headquarters
-  UK Site HVAC | UK Fulfillment Center
-  US Medina Fulfillment Center
-  China Service And Fulfillment Center
-  Malaysia Fulfillment Center



## Global Corporate Office

Jamesway Chick Master Incubator Inc.  
30 High Ridge Court, Cambridge, Ontario  
N1R 7L3, Canada

Tel: +1 519 624 4646  
Fax: +1 519 624 5803  
sales@jamesway.com

## U.S. Office

779 West Smith Road, Medina, Ohio  
44256, USA

Tel: +1 330 722 5591  
Fax: +1 330 723 0233

Check out our website for more information  
on Jamesway products and services:

[www.jamesway.com](http://www.jamesway.com)  
[www.jameswayparts.com](http://www.jameswayparts.com)

## U.K. Office

1 The Leggar, Bridgwater Somerset  
TA6 4AF, United Kingdom

Tel: +44 1278 411000

## Beijing Office

Room 1303 Building D, CATIC Plaza  
No. 15 Ronghua South Road, BDA  
Beijing, 100176 China

Tel: +86 10 6789 2665-8001

## Malaysia Office

13A-2, B01-D, Menara 2, KL Eco City  
59200 Kuala Lumpur.

Tel: +60 03 48156720

**Jamesway** 

December 2025