

# Macerator presentation

Hatchery Equipment suppliers

# What is a Macerator



- This custom-built hatchery egg and shell macerator is designed for the efficient disposal of post-hatch debris at commercial poultry hatcheries after all viable chicks have been removed.
- The egg crusher/chick macerator is also used to humanely cull deformed, malpositioned, or abnormal chicks that are rejected by the hatchery and cannot be placed on farms.



The macerator is widely used across South Africa, as well as in several African countries including Zambia, Ivory Coast, Botswana, Rwanda, Ghana, Zimbabwe, Kenya, and Tanzania.

The purpose of the machine is to crush and macerate leftover waste or by-products, significantly reducing the volume of hatchery waste such as half shells, infertile eggs, and non-viable whole eggs or chicks.

# Macerator Specifications and Design

**Material:** 304 stainless steel construction with hopper and protective safety grill

**Cutting System:** Custom-designed rotating blades and fixed cutters made from heavy-duty stainless steel flat bar

**Drive Unit:** C212 helical 2.2 kW gearmotor, 380V, 3-phase, 2-pole

**Bearings:** Two 30 mm flange-mounted bearings

**Bearing Protection:** Heavy-duty bearing covers

**Controls:**

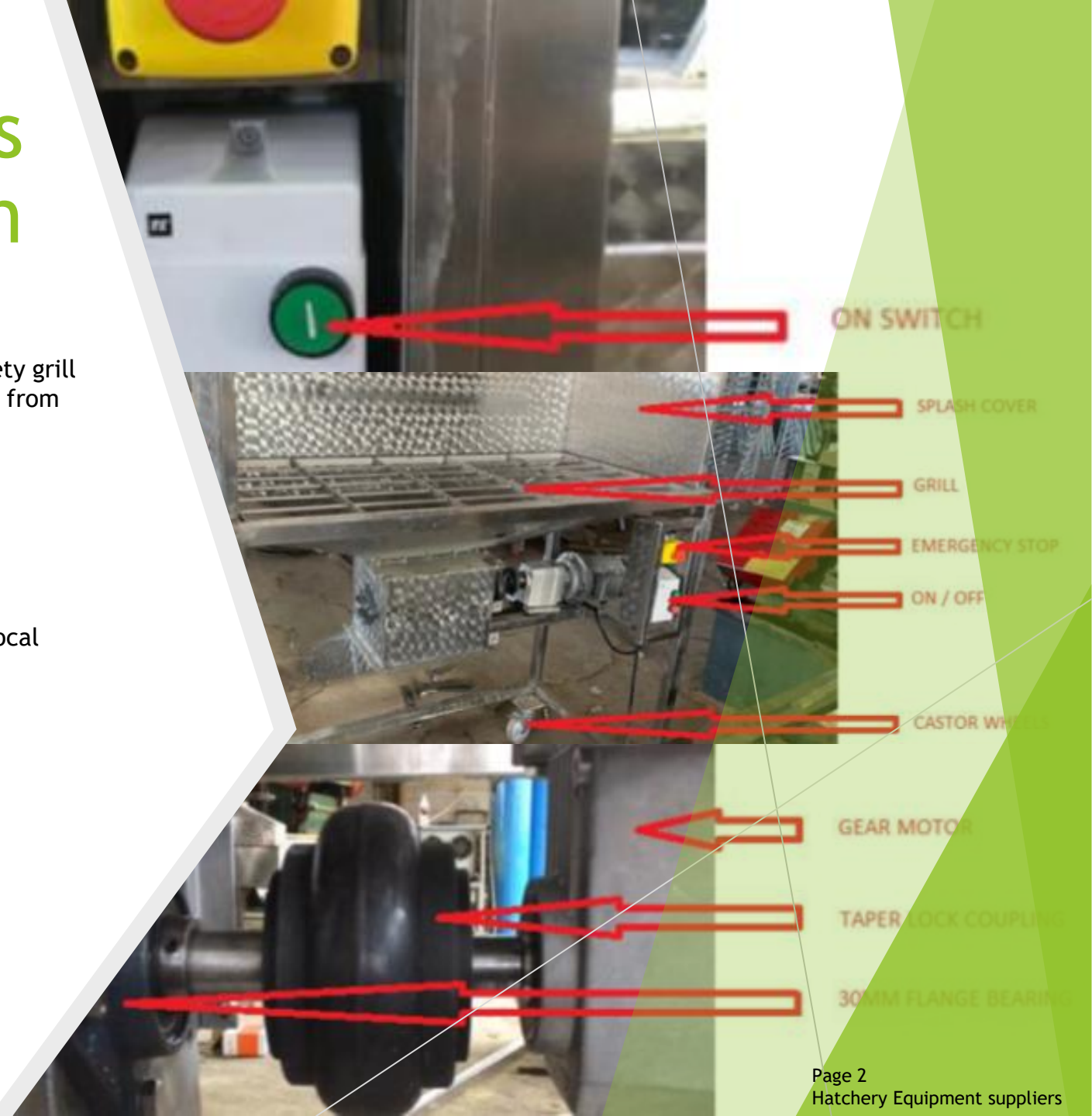
- On/Off switch

- Emergency stop

**Power:** Supplied with power cord (no plug; customer to fit according to local requirements)

**Discharge:** Bottom-mounted stainless steel exhaust chute

**Mobility:** Four 125 mm castor wheels – 2 fixed and 2 swivel with brakes



# Macerator Motor and blades



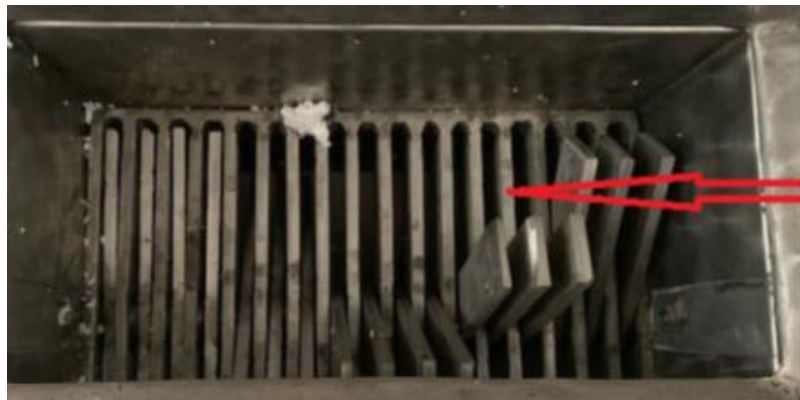
BEARING PROTECTIVE COVER

The motor and all moving components are enclosed behind protective panels to ensure that no moving parts can come into contact with clothing or body parts. This design prioritises operator safety—our number one commitment—while still meeting all your hatchery’s operational needs.



MOTOR 2.2KW 400V 3 PHASE WITH INLINE GEAR BOX AND OUTPUT SHAFT

The macerator motor drives the blades located at the top of the machine. As these blades rotate, they crush the eggshells and chick mortalities efficiently. Protective plates are installed around the blade area to ensure safe operation and to safeguard the bearings from damage.



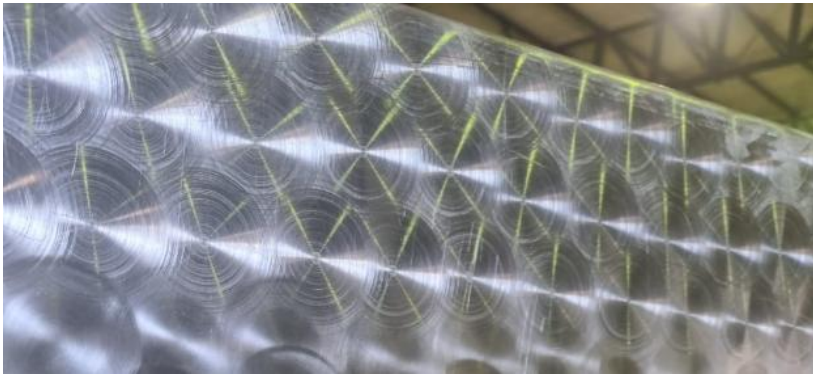
MACERATOR SHOWING FIXED TEETH AND MOVING BLADES

# Macerator exhaust chute

- ▶ Our macerators are designed with an integrated exhaust chute through which all processed debris is discharged. This chute should be positioned over a stable platform with a secure bin or designated waste area to ensure proper containment and safe handling of all debris



# Our workshop technique or signature pattern



As you will see, the HES team has developed a unique design that truly sets our product apart. Through teamwork, innovation, and a commitment to quality, we are able to provide you with a reliable machine tailored to your specific needs. In addition to its functionality, our unique design adds character and a professional touch to your premises.

## THE END

Hatchery Equipment Suppliers sincerely appreciates your time and values your business. Thank you for considering our products and trusting us to support your hatchery operations

► Hatchery Equipment suppliers, Proud supplier of Hatchery equipment for over 40 Years



“Hatchery Equipment Suppliers has a hardworking and dedicated team that builds each macerator to your exact requirements—from start to finish—including our unique design pattern.

